

## Presenter profile

Mark Bettany, Mark's Morning Mix  
Saturday 7am - 9am

Mark plays country, blues, folk, and also has news, sport and weather, with the occasional interview.

If Mark Bettany had to take a book onto a desert island, it would be 'How to build a boat'. But when it comes to music he gets serious. His 'desert island disc' would be something by Bert Jansch, guitarist and singer with Pentangle, a band Jansch co-founded in 1968 with John Renbourn, Jacqui McShee, Danny Thompson and Terry Cox.

"I could listen to Bert Jansch all day. He's such an amazing musician that Jimmy Page from Led Zeppelin said if he could come back that's who he would come back as."

Mark started with Radio Mansfield 17 years ago, in their first premises at the old station master's house. He has served on the committee and had a number of shows on air, with this last one running for the last four or five years.

He says he got involved in the first place because of music. "When I was 12 or 13 I used to listen to a music show on 3XY and I used to listen to it in bed. I heard music full of melody and poetry. I think people listen to garbage these days because they haven't been exposed. People listen to garbage, and it's because they haven't been exposed to great music."

Mark says his show is pretty easygoing but no matter what style of music he plays, he tries to make sure it's good music. He says he gets good feedback from listeners.

The community aspect of Radio Mansfield is an important part of presenting at the radio station. A highlight was when during one of his shows the community organised for some horses to be rescued during a fire and found some lost dogs.

"I like that because it means someone's listening, and we're doing an important job."

## Stay in touch on Facebook

We have a new Facebook page. It's a great way to keep in touch with our events and news.

Find us at [facebook.com/radiomansfield99.7FM](https://www.facebook.com/radiomansfield99.7FM)

## Get involved!

Radio Mansfield There are plenty of opportunities to contribute to the Radio Mansfield, even if you don't fancy getting behind a microphone!

Contact us on our Facebook page, or email [enquiries@radiomansfield.org.au](mailto:enquiries@radiomansfield.org.au)

## Progress on the Tolmie tower and wi fi link to the Paps

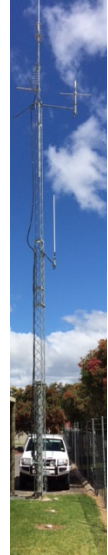
Thank you to the Mansfield Community fund for their donation of \$1000, and to the Mansfield Lions Club for their donation of \$2000.

Both donations have helped us make progress towards our new transmission tower at Tolmie.

These new initiatives will help us be heard more clearly by more listeners - and also extend our emergency broadcasting coverage.

Pictured at the right is a tower very similar to the one we'll be installing at Tolmie after the winter, in time for the next fire season.

We have also received \$3000 from the Mansfield Shire Community Matching Fund to provide a wifi link to Paps.



Pictured: John Coffey with representatives of the Mansfield Community Fund and a huge cheque!



## Your emergency broadcaster

Remember that Radio Mansfield 99.7 FM is your local emergency broadcaster.

On 28 December storms damaged the power line to The Paps and all TV and radio was out in Mansfield - except Radio Mansfield. Our standby generator kicked in and we broadcast as usual during the blackout.

There are few easy ways to be prepared for an emergency - and one of them is to stay connected to Radio Mansfield 99.7FM, your local source of emergency information.

Keep a battery powered radio at home for when the power goes out. Listen in on the car radio, or stream our programs and emergency notices on the website at [www.radiomansfield.org.au](http://www.radiomansfield.org.au)